



Alarm Manager Help Sheet

Read Only Version

1. Introduction

The Alarm Manager Read Only version is designed to be installed on laptop computers which might for example be used by an Engineer who might require access to Customer and Service data while on the road, on-site or on-call. It can be installed on a laptop or desktop computer.

The Read Only version of Alarm Manager will allow you to view data in the “Customers” and “Service Calls” sections of the program but you will not be able to Edit or Save any data or Add any new Customers or Service Calls. If you select any of the “Add” or “Edit” options you may enter or change data on the screen but when you click on the “Save” button there will be no facility to save.

In the Read Only version you will not be able to access the Reports, although it is possible to enable the Reports in the Read Only version and should you require to do so, please contact Mercury Software.

You will not be able to access the Data Maintenance, Utilities or User Config sections of the program.

The data must be restored to the Read Only version from a backup made from the main system and you can do so as often as required. Instructions are provided below.

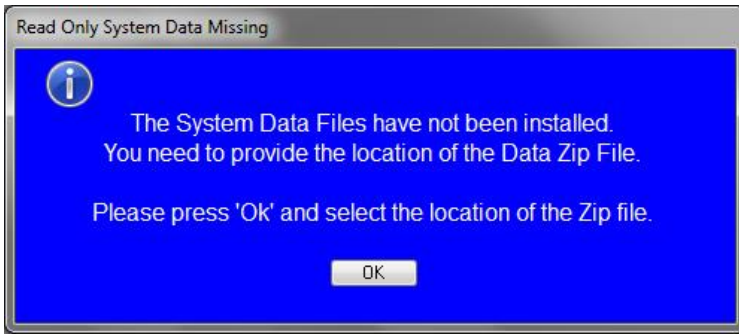
2. Installation

If you do not already have the Alarm Manager Read Only version, this is available for an additional Annual Licence fee of €295 plus VAT and this covers up to 10 installed copies of the Read Only version.

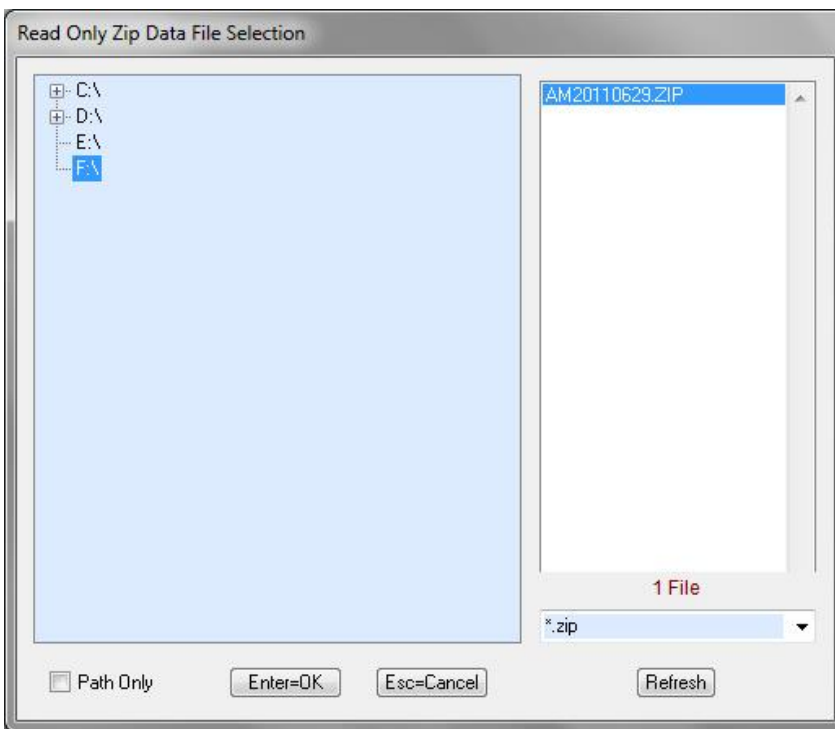
Once you purchase a Licence for the Alarm Manager Read Only version, you will be provided with the necessary software and installation instructions.

3. First Run – Initial Restore of Data

The first time you run the Alarm Manager Read Only version following installation, the program will not find any Alarm Manager data on the computer and the following message will be displayed:



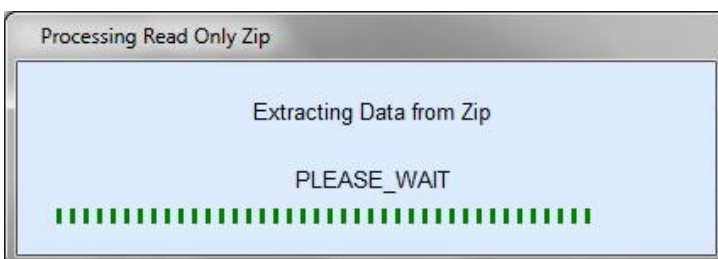
When you click OK, the following screen will be displayed, allowing you to select the Drive and Folder which contains the Alarm Manager backup from your main Alarm Manager system.



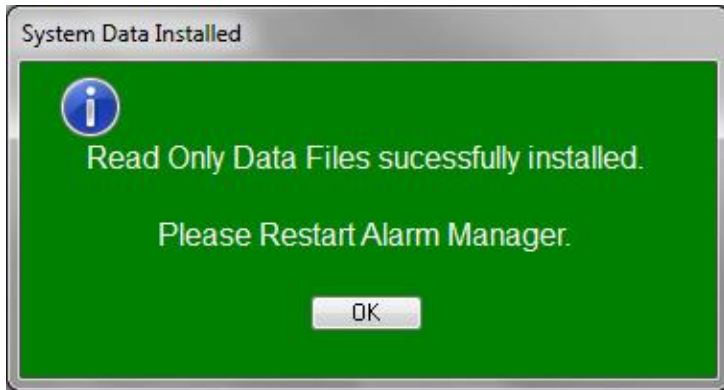
Once you select the Drive and/or Folder which contains the Alarm Manager backup file, a list of all Backup files will be displayed from which you should select the most recent file. The files should be sorted in reverse date order with the most recent file appearing at the top of the list.

Double click on the required file to select it.

The Alarm Manager data will then be extracted from the Backup file and installed onto the computer.



When this is complete the following screen will be displayed:



You should then click OK and restart the Alarm Manager Read Only program.

4. Restoring Data

You can update the data used in your Alarm Manager Read Only version as often as you require.

Click on the Restore button on the Toolbar.



Once you confirm your intention to restore data, you can follow the procedures described above.